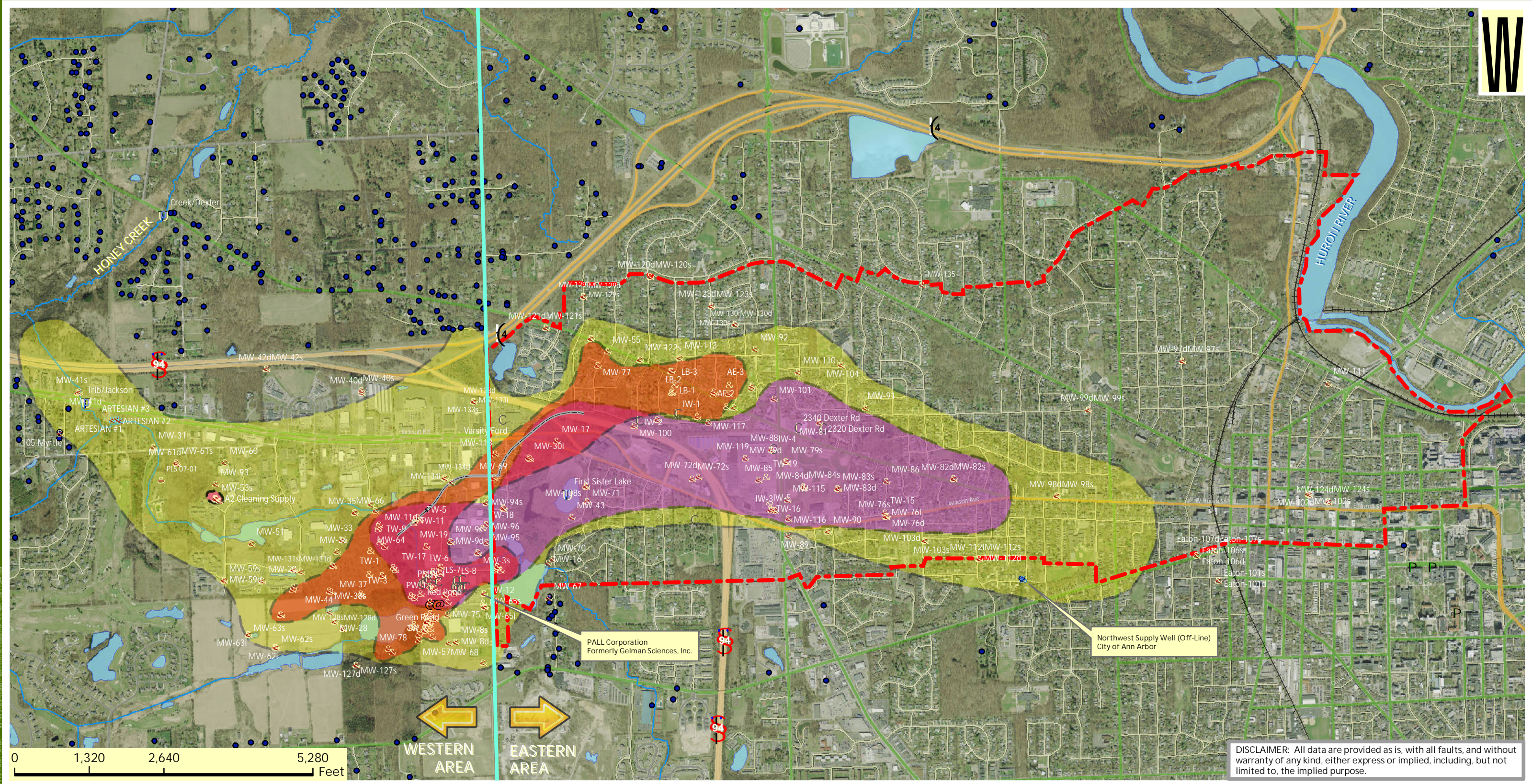




PALL CORPORATION (formerly Gelman Sciences, Inc.)
1,4-Dioxane Plumes, Well Locations, and Groundwater Use Prohibition Zone (PZ)
Washtenaw County, Michigan



KEY

- | | | |
|------------------------------|-----------------------------------|--|
| & Monitoring Wells | & Abandoned Wells | Unit E or Deep Aquifer Plume (>85 ppb) |
| & Injection Wells | Horizontal Pipeline/Well Screen | Core & Evergreen Plume (>85 ppb) |
| & Extraction Wells | Surface Water Sampling Location | Little Lake Area Plume (>85 ppb) |
| & Artesian Wells | U of M Research Water Supply Well | Groundwater Water Use Prohibition Zone |
| + Misc. Wells | Residential Wells | |
| & Hydrogeologic Test Borings | | |

Estimated Plume (>1 ppb)
--Depiction represents an estimation of the 1,4-dioxane plume based on sampling locations that have detections of 1,4-dioxane greater than 1 part per billion (ppb) or sampling locations with historical detections greater than 1 ppb that may currently be below detectable levels.

DISCLAIMER: All data are provided as is, with all faults, and without warranty of any kind, either express or implied, including, but not limited to, the implied purpose.

MAP PRODUCED BY:
Environmental Health Division
Department of Public Health
Washtenaw County, Michigan

SOURCES:
MIGDL
PALL/MDEQ Database
Washtenaw County GIS