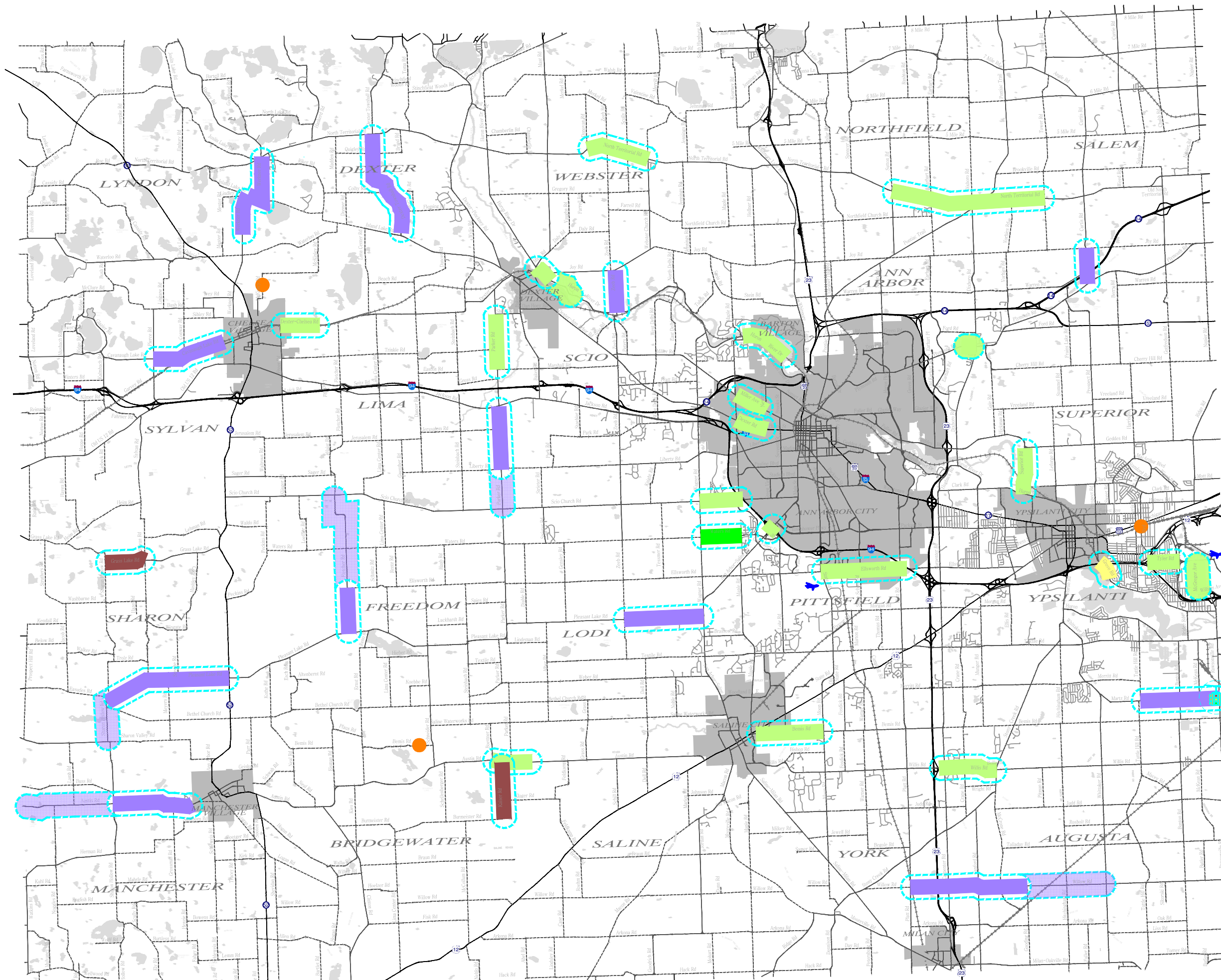


Proposed 2012 County Millage Projects for Washtenaw County Road Commission



Not to Scale



Legend - Proposed Projects

- Crack Seal
- Sealcoat
- Overlay
- Mill/Overlay
- Concrete Repair
- Reconstruction
- Gravel Road Improvement
- County Millage Funding
- Signal Improvement
- Bridge/Culvert Replacement
- Potential Sealcoat Based on Bids
- Potential Mill/Overlay Based on Bids