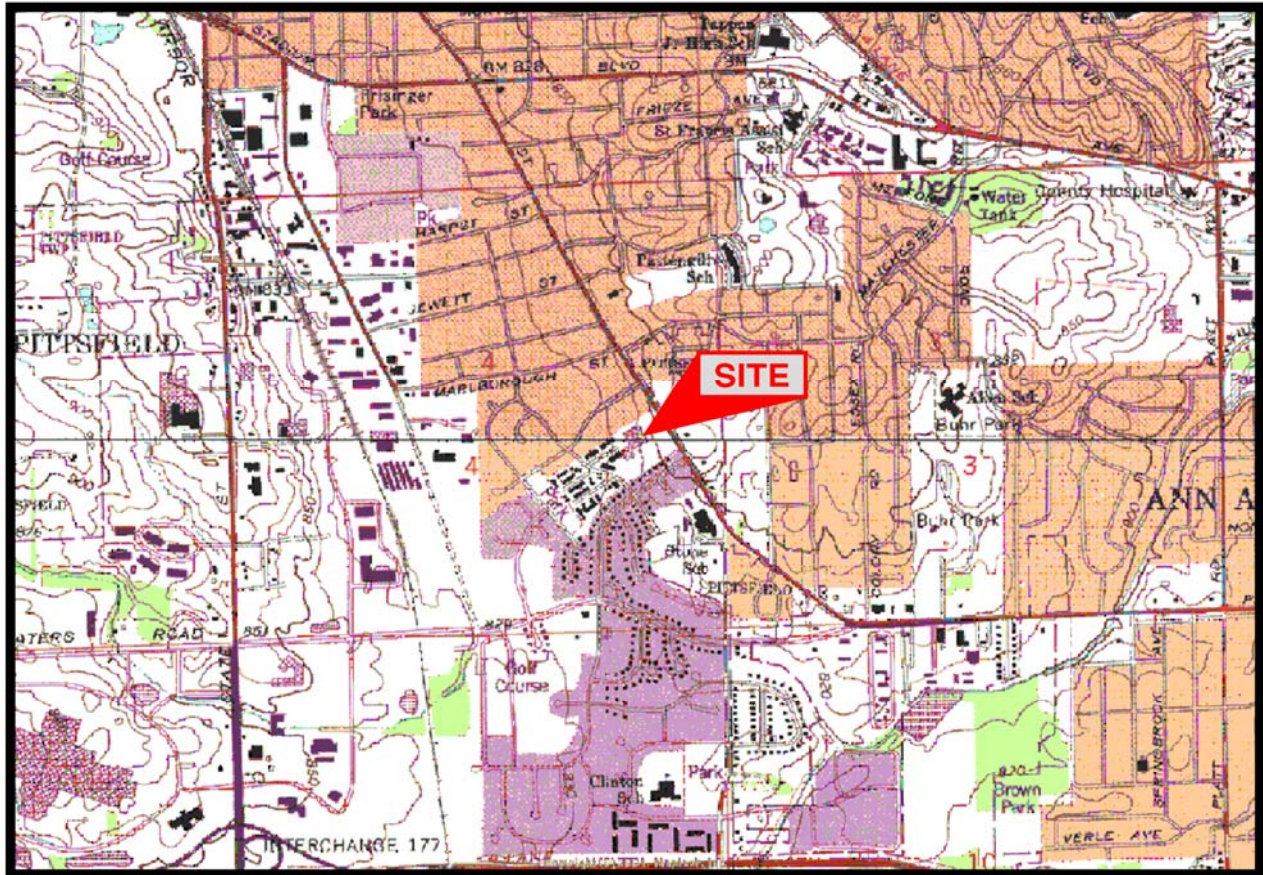
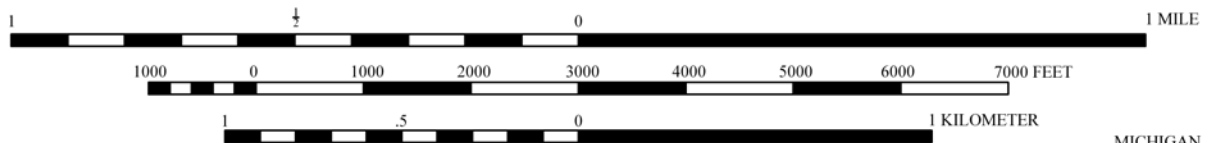


ANN ARBOR EAST QUADRANGLE
 MICHIGAN - WASHTENAW COUNTY
 7.5 MINUTE SERIES (TOPOGRAPHIC)



T.3 S. - R.6 E.



CONTOUR INTERVAL 10 FEET
 DATUM IS MEAN SEA LEVEL



IMAGE TAKEN FROM 1975 U.S.G.S. TOPOGRAPHIC MAP
 PHOTOREVISED 1976

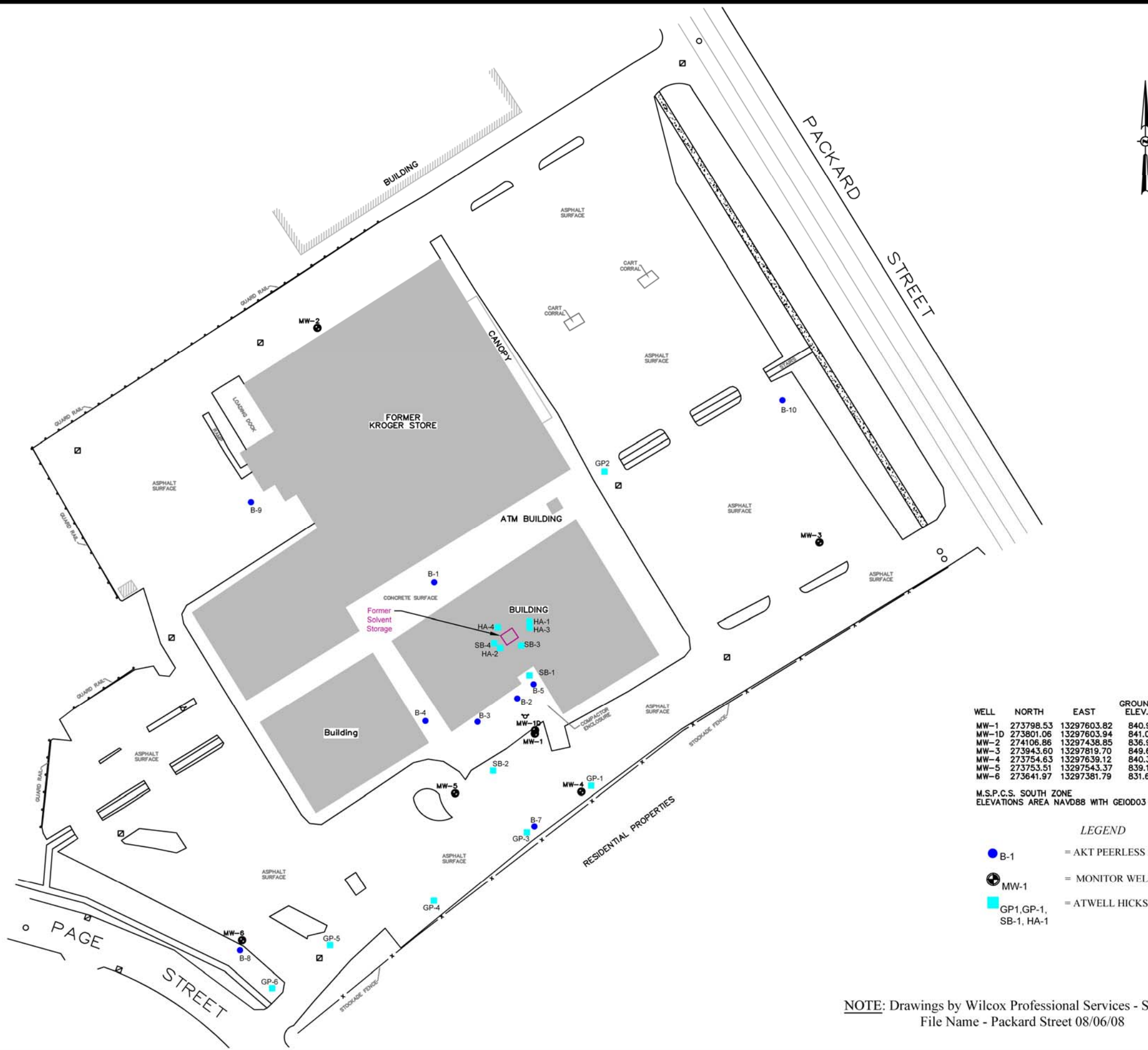
AKTPEERLESS
 environmental & energy services
 FARMINGTON DETROIT SAGINAW LANSING
 WWW.AKTPEERLESS.COM

TOPOGRAPHIC LOCATION MAP

HARBOR GEORGETOWN LLC
 2502-2568 PACKARD
 ANN ARBOR, MICHIGAN
 PROJECT NUMBER : 4438F-9-20

DRAWN BY: K Edmond
 DATE: 1/28/2010

FIGURE 1



WELL	NORTH	EAST	GROUND ELEV.	TOC ELEV.
MW-1	273798.53	13297603.82	840.93	840.49
MW-1D	273801.06	13297603.94	841.09	840.61
MW-2	274106.86	13297438.85	836.98	836.65
MW-3	273943.60	13297819.70	849.69	849.23
MW-4	273754.63	13297639.12	840.35	840.00
MW-5	273753.51	13297543.37	839.14	838.78
MW-6	273641.97	13297381.79	831.67	831.23

M.S.P.C.S. SOUTH ZONE
ELEVATIONS AREA NAVD88 WITH GEIOD03

LEGEND

- B-1 = AKT PEERLESS 2005 BORING
- MW-1 = MONITOR WELL
- GP1, GP-1, SB-1, HA-1 = ATWELL HICKS BORING 2000 & 2003

NOTE: Drawings by Wilcox Professional Services - Saginaw, Michigan
File Name - Packard Street 08/06/08

DRAWN BY: K Edmond
DATE: 1/28/2010

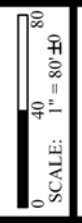


FIGURE 2

SITE MAP WITH SOIL BORING AND MONITORING WELL LOCATIONS

HARBOR GEORGETOWN LLC
2502-2568 PACKARD
ANN ARBOR, MICHIGAN
PROJECT NUMBER : 4438F-9-20

AKTPEERLESS
environmental & energy services
FARMINGTON DETROIT SAGINAW LANSING
WWW.AKTPEERLESS.COM

HA-1 (5')
7/27/2000
Tetrachloroethylene 8,300 ug/Kg

HA-2 (5')
7/27/2000
Tetrachloroethylene 2,160 ug/Kg

SB-1 (0.5-1')
8/30/2000
Tetrachloroethylene 1,150 ug/Kg

B-3 (0.5-1')
4/25/2005
Tetrachloroethylene 1,100 ug/Kg

B-5 (0.5-1')
4/26/2005
Tetrachloroethylene 60,000 ug/Kg
Trichloroethylene 370 ug/Kg

B-5 (7-8')
4/26/2005
Tetrachloroethylene 8,900 ug/Kg
Trichloroethylene 220 ug/Kg



WELL	NORTH	EAST	GROUND ELEV.	TOC ELEV.
MW-1	273798.53	13297603.82	840.93	840.49
MW-10	273801.06	13297603.94	841.09	840.61
MW-2	274106.86	13297438.85	836.98	836.65
MW-3	273943.60	13297819.70	849.69	849.23
MW-4	273754.63	13297639.12	840.35	840.00
MW-5	273753.51	13297543.37	839.14	838.78
MW-6	273641.97	13297381.79	831.67	831.23

M.S.P.C.S. SOUTH ZONE
ELEVATIONS AREA NAVD88 WITH GEIOD03

LEGEND

- B-1 = AKT PEERLESS 2005 BORING
- MW-1 = MONITOR WELL
- GP1, GP-1, SB-1, HA-1 = ATWELL HICKS BORING 2000 & 2003

NOTE: Drawings by Wilcox Professional Services - Saginaw, Michigan
File Name - Packard Street 08/06/08

DRAWN BY: K Edmond
DATE: 1/28/2010
SCALE: 1" = 80'-0"
FIGURE 3

SITE MAP WITH SOIL ANALYTICAL RESULTS
HARBOR GEORGETOWN LLC
2502-2568 PACKARD
ANN ARBOR, MICHIGAN
PROJECT NUMBER : 4438F-9-20

AKTPEERLESS
environmental & energy services
FARMINGTON DETROIT SAGINAW LANSING
WWW.AKTPEERLESS.COM



WELL	NORTH	EAST	GROUND ELEV.	TOC ELEV.
MW-1	273798.53	13297603.82	840.93	840.49
MW-10	273801.06	13297603.94	841.09	840.61
MW-2	274106.86	13297438.85	836.98	836.65
MW-3	273943.80	13297819.70	849.69	849.23
MW-4	273754.83	13297639.12	840.35	840.00
MW-5	273753.51	13297543.37	839.14	838.78
MW-6	273641.97	13297381.79	831.67	831.23

M.S.P.C.S. SOUTH ZONE
ELEVATIONS AREA NAVD88 WITH GEI003

- LEGEND**
- B-1 = AKT PEERLESS 2005 BORING
 - MW-1 = MONITOR WELL
 - GP1, GP-1, SB-1, HA-1 = ATWELL HICKS BORING 2000 & 2003
 - = PROPOSED SHELVED EXCAVATION 5 FEET
 - = PROPOSED SHELVED EXCAVATION 10 FEET
 - = PROPOSED SHELVED EXCAVATION 15 FEET

NOTE: Drawings by Wilcox Professional Services - Saginaw, Michigan
File Name - Packard Street 08/06/08

SITE MAP WITH PROPOSED EXCAVATION

HARBOR GEORGETOWN LLC
2502-2568 PACKARD
ANN ARBOR, MICHIGAN
PROJECT NUMBER : 4438F-9-20