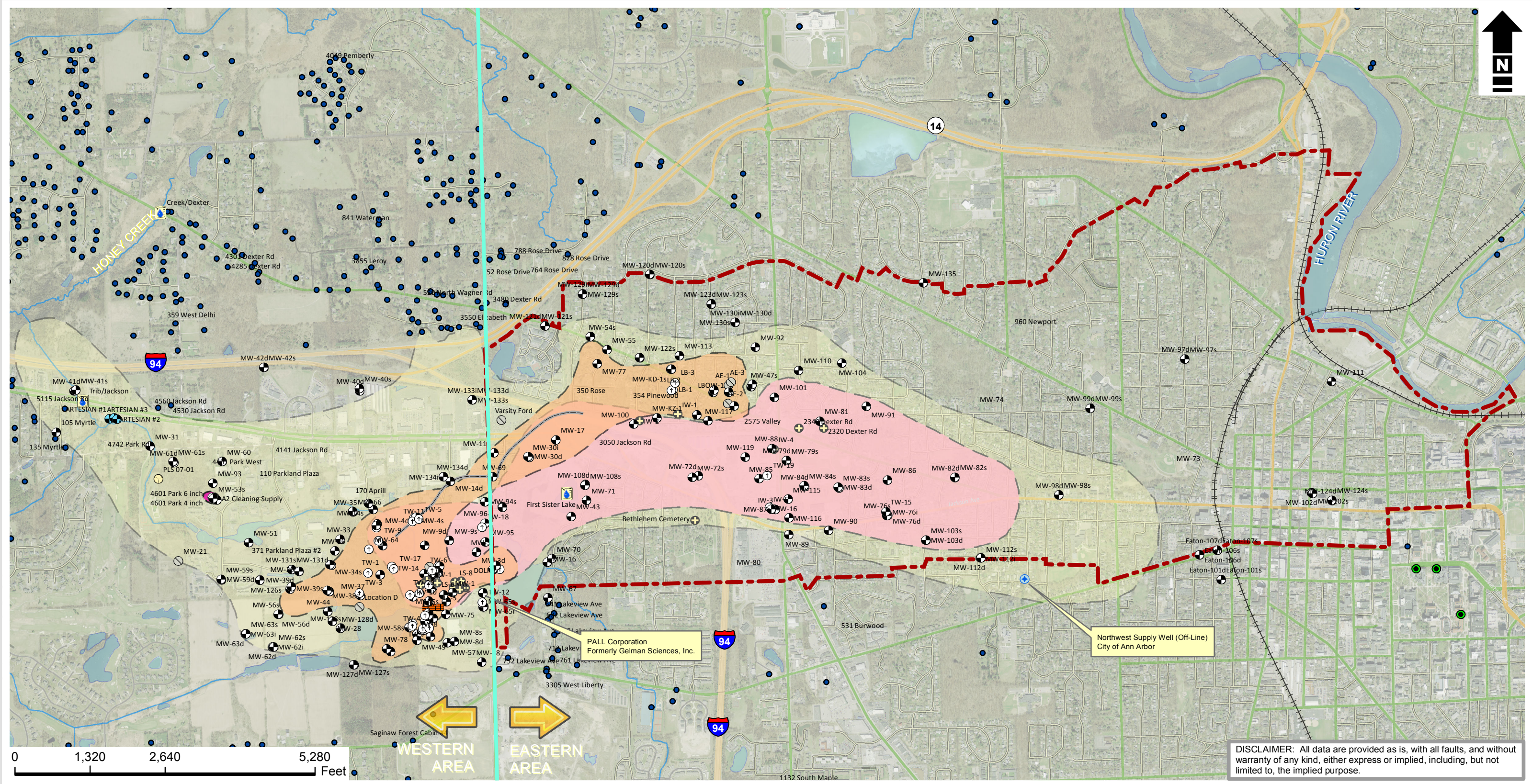




# PALL CORPORATION (formerly Gelman Sciences, Inc.)

## 1,4-Dioxane Plumes, Well Locations, and Groundwater Use Prohibition Zone (PZ)

### Washtenaw County, Michigan



DISCLAIMER: All data are provided as is, with all faults, and without warranty of any kind, either express or implied, including, but not limited to, the implied purpose.

**KEY**

- Monitoring Wells
- Injection Wells
- Extraction Wells
- Artesian Wells
- Misc. Wells
- Hydrogeologic Test Borings
- Abandoned Wells
- Horizontal Pipeline/Well Screen
- Surface Water Sampling Location
- U of M Research Water Supply Well
- Residential Wells
- Unit E or Deep Aquifer Plume (>85 ppb)
- Core & Evergreen Plume (>85 ppb)
- Little Lake Area Plume (>85 ppb)
- Groundwater Water Use Prohibition Zone
- Treatment System

Estimated Plume (>1 ppb)  
 --Depiction represents an estimation of the 1,4-dioxane plume based on sampling locations that have detections of 1,4-dioxane greater than 1 part per billion (ppb) or sampling locations with historical detections greater than 1 ppb that may currently be below detectable levels.

MAP PRODUCED BY:  
 Environmental Health Division  
 Department of Public Health  
 Washtenaw County, Michigan

SOURCES:  
 MIGDL  
 PALL/MDEQ Database  
 Washtenaw County GIS